



Tank

Industries

A Division of ATC (Pty) Ltd.

Type "4" Terminations

REUNERT

REUNERT LIMITED

Gbielectric

Gbielectric
aberdare atc telecom cables

Gbielectric
african cables

Gbielectric
low voltage

Tank
Industries

A Division of ATC (Pty) Ltd.



Accred Accredited Supplier of LV / MV and HV Cable Accessories: ssories



CABLE TERMINATION SYSTEMS



SPECIALISED CABLE CONNECTIONS



CABLE JOINTING SYSTEMS



MOULDED INSULATION COMPONENTS



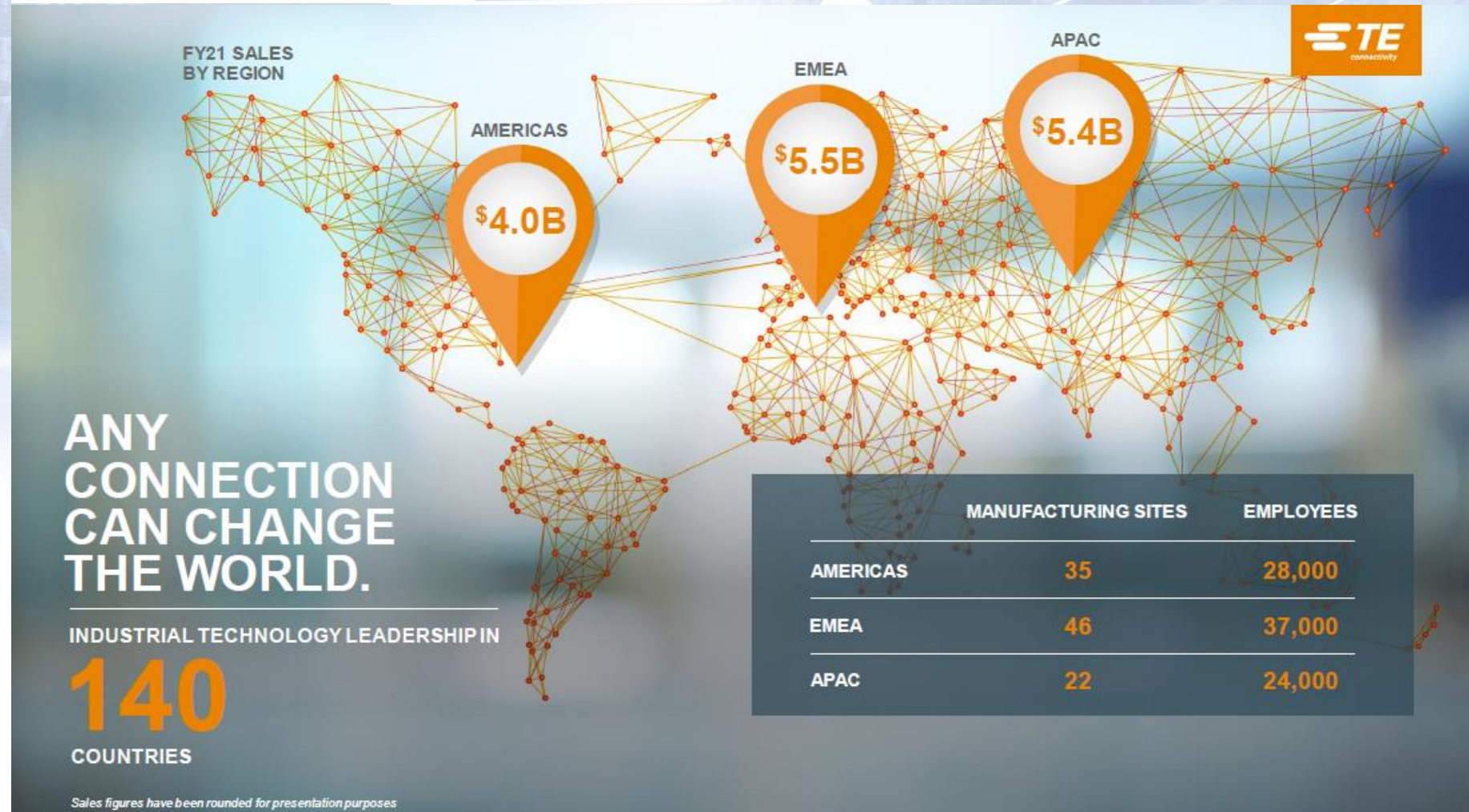
Raychem
from TE Connectivity



A Division of ATC (Pty) Ltd.

WAP







INDUSTRIAL TECHNOLOGY LEADERSHIP

FORTUNE
WORLD'S MOST
ADMIRABLE
COMPANIES
2021

Top 100
Global
Innovator
2021

Clarivate™

FAST COMPANY

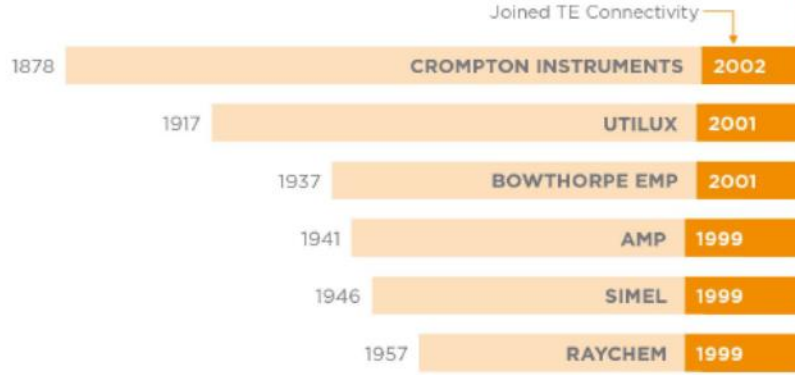
BEST WORKPLACES
FOR INNOVATION
2020

TE CONNECTIVITY

<p>15K+</p> <p>PATENTS granted or pending</p>	<p>\$675M+</p> <p>INVESTED in engineering, research & development</p>	<p>8000+</p> <p>ENGINEERS globally</p>	<p>Approximately</p> <p>20%</p> <p>of sales from new products</p> <p><small>All figures from financial year 2021</small></p>
---	---	--	---



We Are the Brands You Rely On

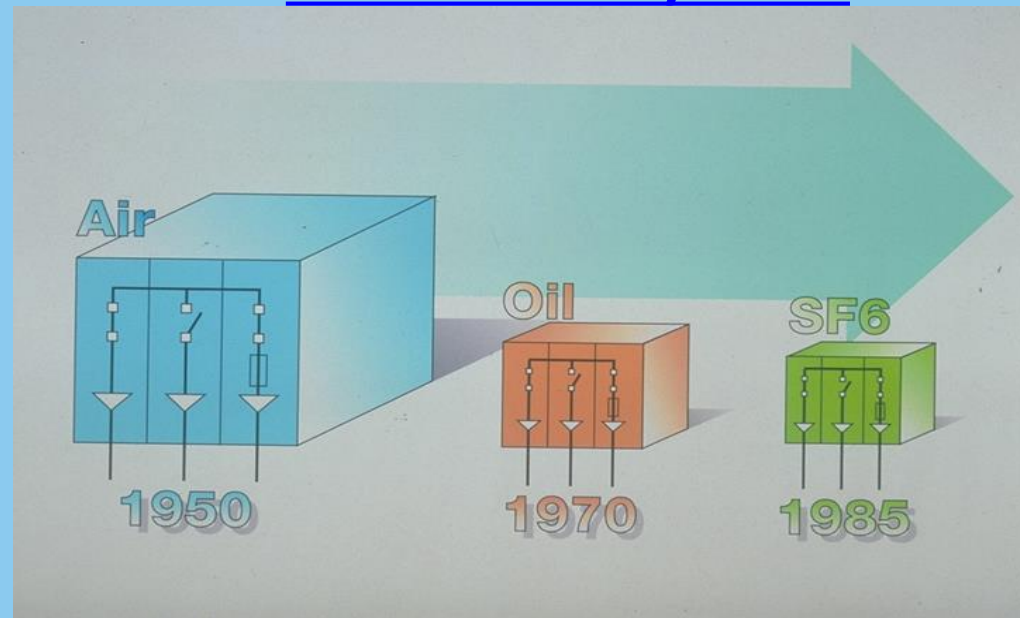


If you know Raychem,
you know TE Connectivity

SANS 876

- Type 1: Bare
- Type 2: Shrouded
- Type 3: Unscreened Separable Connectors (USC)
- Type 4: Screened Separable Connectors (SSC)
- Type 5: Plug-in Connectors

Why the trend for going from Type 1 towards Type 4/5 Termination System?



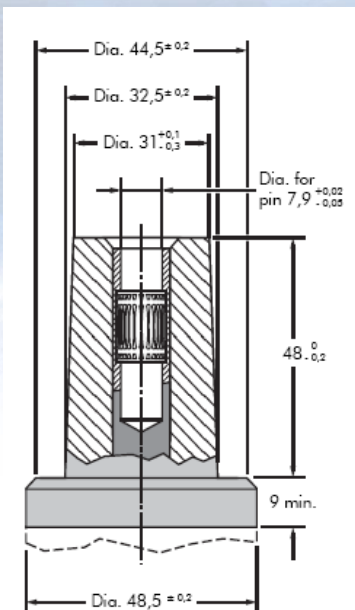
Selection Criteria for Separable Connectors

Choosing the correct separable connector depends on the following criteria:

- Current rating and voltage level
- Application / Geometry of the connection
- Safety requirements
- Preferences regarding installation procedures / Ease of installation
- Insulation Material
- Required accessories

Bushing profiles in accordance EN 50181

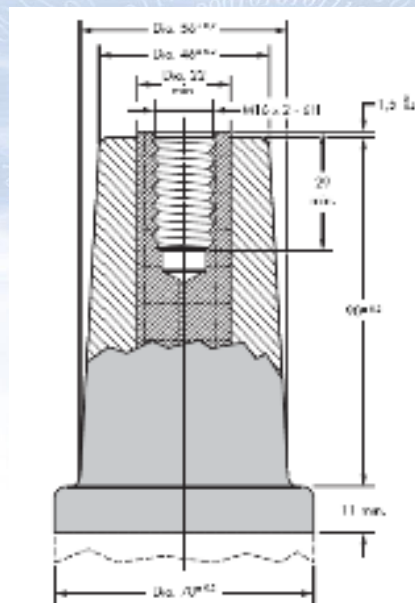
Outer Cone



Sliding contact

Type A: up to 250A / 24kV

Type B: up to 400A / 36kV



Threaded contact

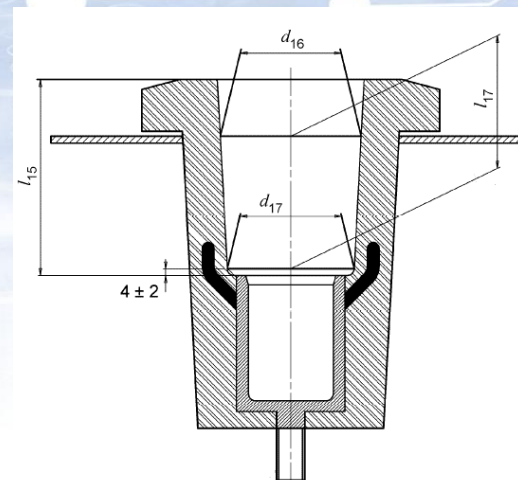
Type C: up to 1250A / 36kV

Type D: up to 1250A / 36kV

Type E: up to 1250A / 36kV

Type F: up to 2500A / 52kV

Inner Cone



Sliding contact / Flange

Size 0: up to 250A / 24kV

Size 1: up to 630A / 36kV

Size 2: up to 800A / 36kV

Size 3: up to 1250A / 52kV

RSTI for bushing type “C” according to EN50181

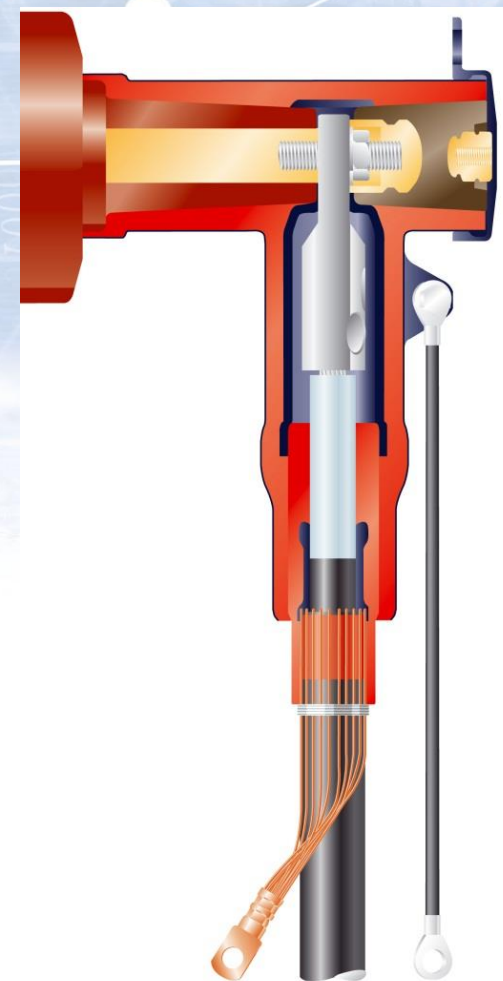
Nominal Current classification

“C₁ = 630 A” up to 300mm²

“C₂ = 1250 A” up to 1000mm²

Design and Material

- Made of a high performing silicone rubber
- Thin-walled outer conductive screen for highest reliability and safety standards
- Designed for indoor and outdoor installation
- Removable rear plug with capacitive test point
- Sealing integrated in stress cone adapter
- Suitable for parallel connections with compatible coupling connectors and/or surge arrester coupling connector

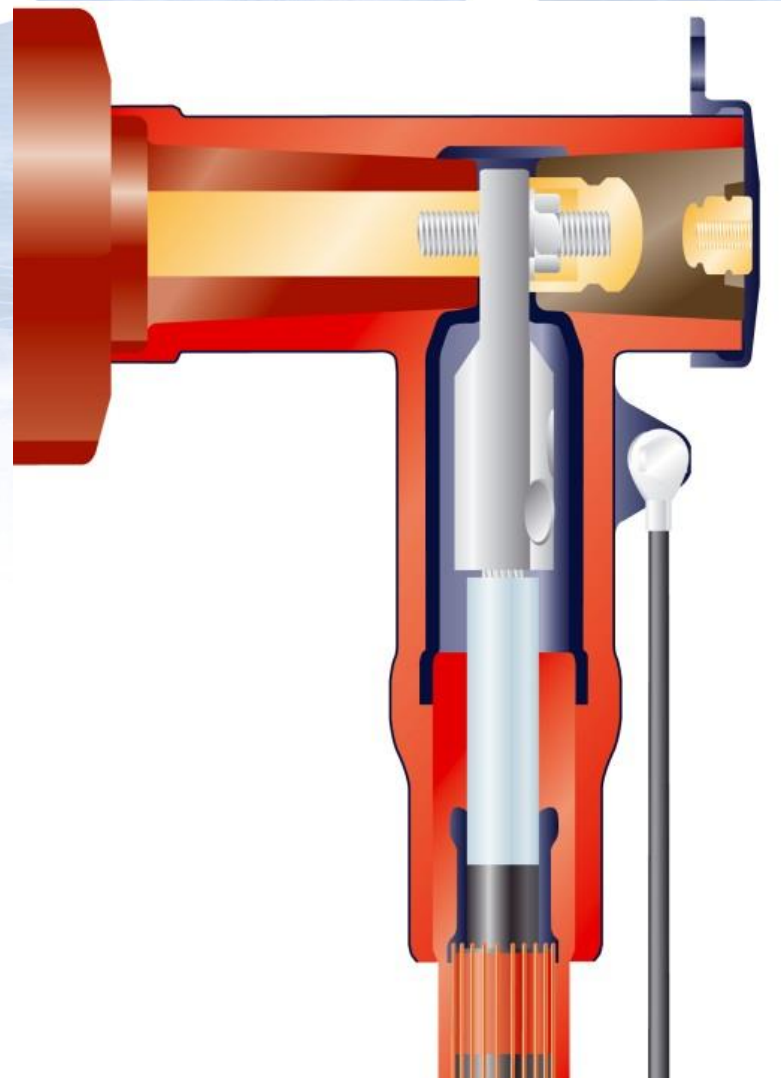


Key Features

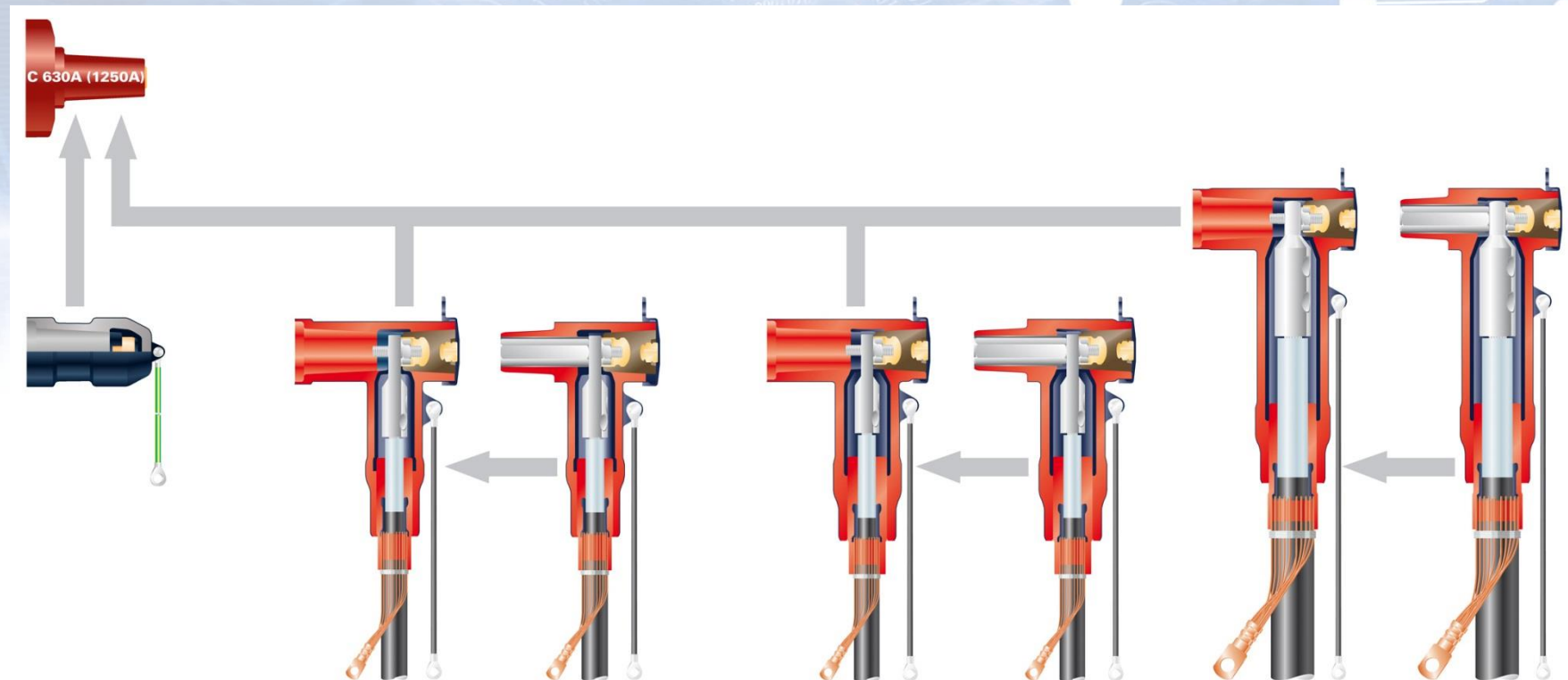
- Dead break T-connectors suitable for bushing type „C“ acc. to EN50181 rated up to 42kV / 1250A
- Designed for polymeric cables with up to 1000 mm² conductor cross section
- Capacitive test point
- Shield-break design (outer sheath-testing without disconnection of connector)
- Type tested acc. to HD629.1 S2 and GB/T 12706.4



Design and Material



Power Engineering Electric Power Distribution



Tri-furcation kits for 3-core applications



- Kit includes core protection tubing and breakout. Both components are made of heat shrinkable polyolefin material
- Designed for tape and wire shielded cables
- Armored cable
- Kits with reinforced crutch design for 10kA short circuit withstand capability



FIELD EXPERIENCE



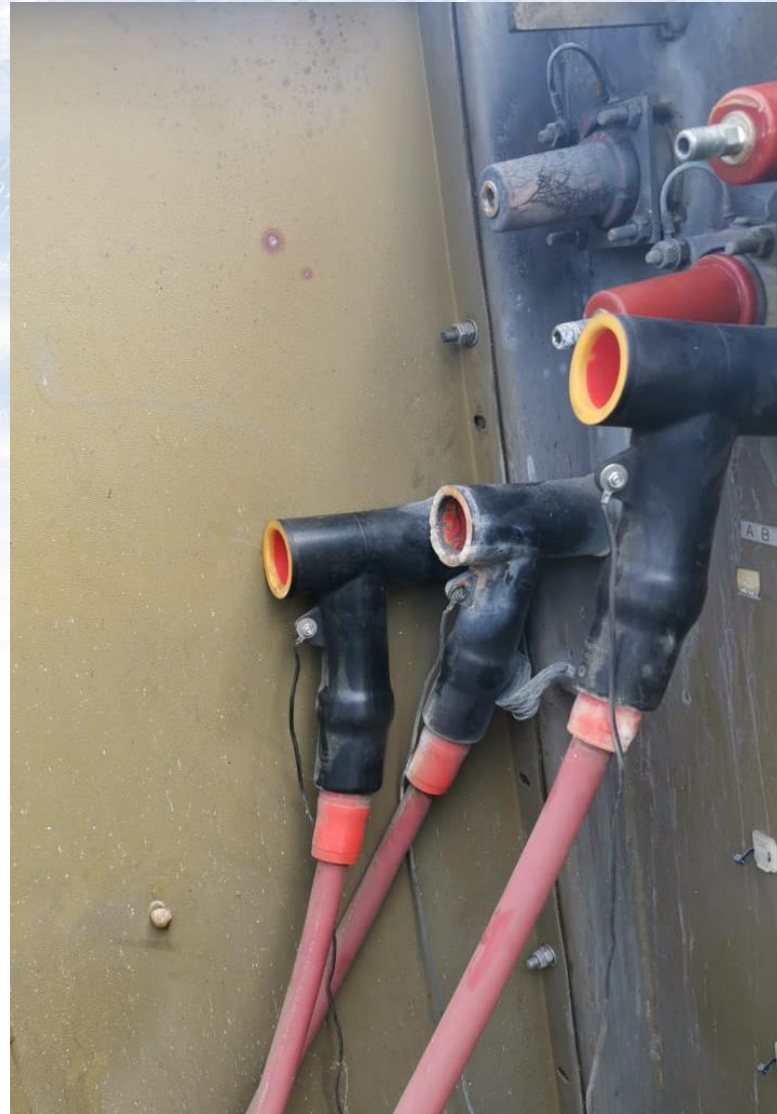
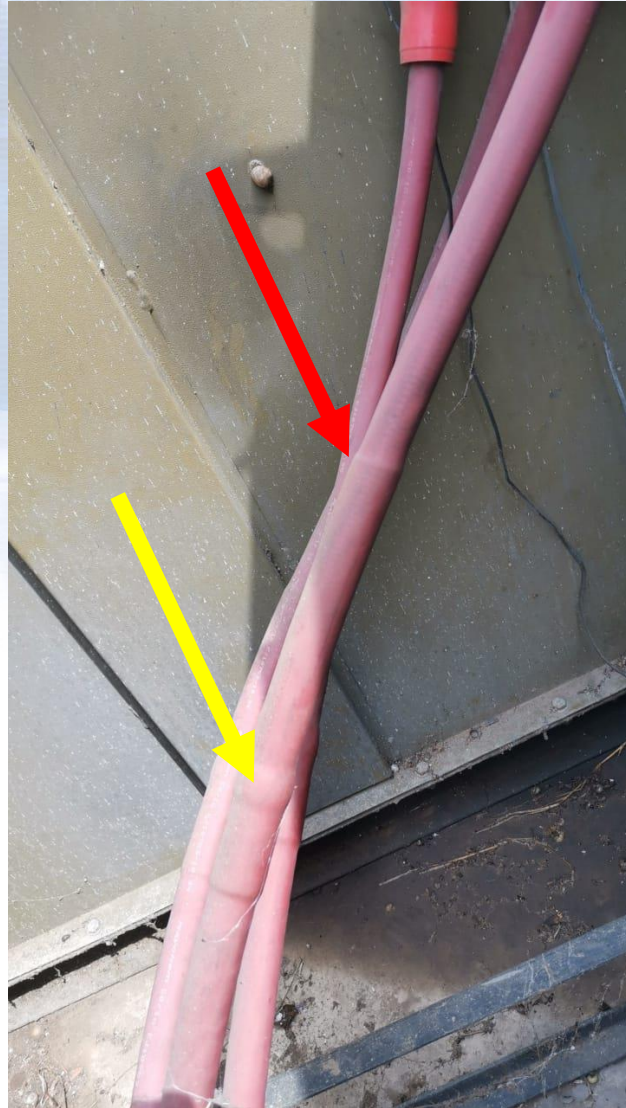
FIELD EXPERIENCE



FIELD EXPERIENCE



FIELD EXPERIENCE



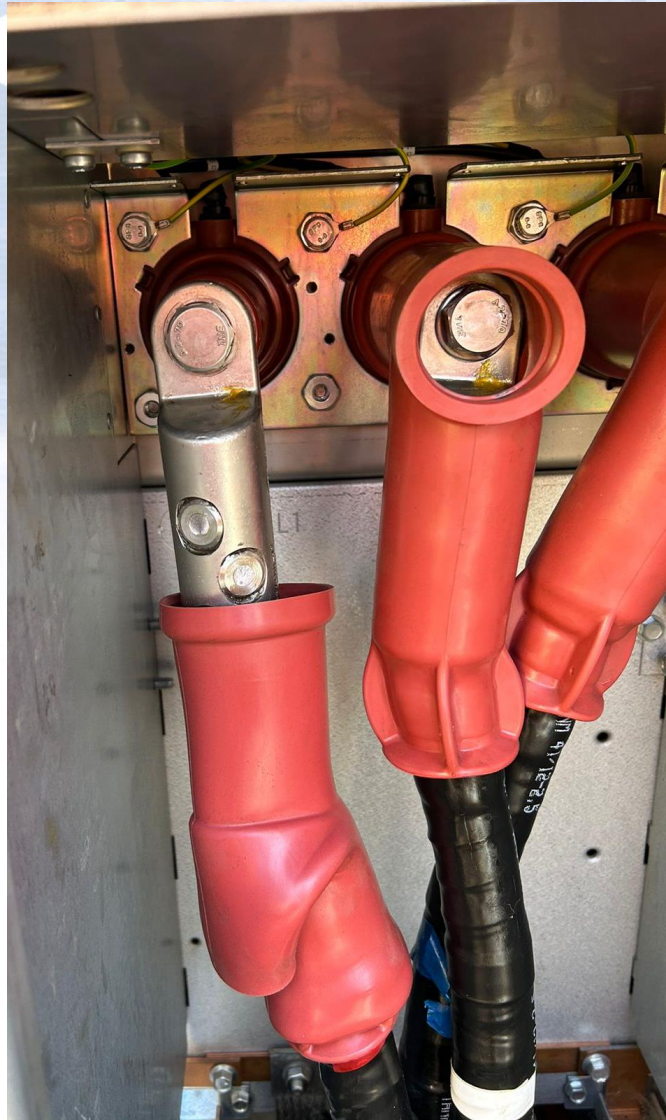
FIELD EXPERIENCE



FIELD EXPERIENCE



FIELD EXPERIENCE



FIB





TRAINING
division

division
TRAINING



Accredited Training in the Jointing & Termination of Low & Medium Voltage Cables



**ACCREDITED TRAINING
CENTRE**



MV TRAINING



LV TRAINING



FIBRE OPTIC TRAINING

ACCREDITATION



merSETA

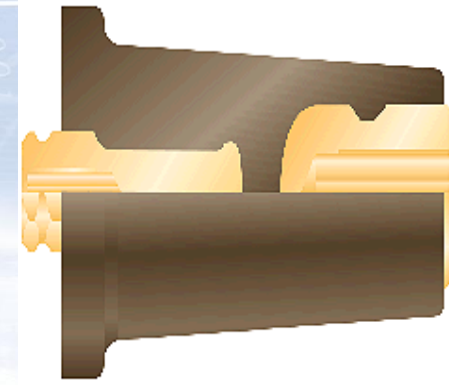
APPROVAL NO: 17-QA/ACC/0154/07



APPROVAL NO: 583/137

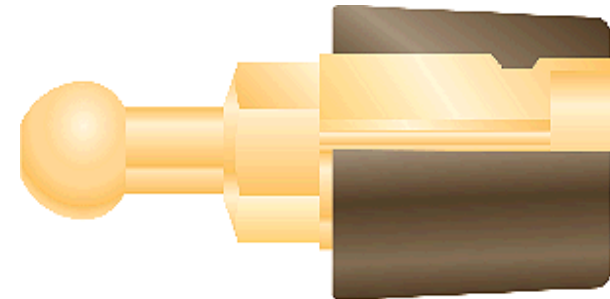
Terminating Plug - RSTI-68TP

- Insulating plug with capacitive test point
- Profile designed to insulate the front end of connector
- Component used as terminating plug for various other connector combinations



Earthing Plug – RSTI-68EAx

- Earthing plug for rear end with direct contact to conductor
- Product available with 20 or 25mm ball end and threading reducer M16 / M12
- Visible earthing connection during maintenance work – improved safety



Test Rod

Comparison of overhead lines with cables

- Direct contact to cable conductor as needed for system test
- Products come with threading reducer M16 / M12
- RSTI-68TR -> Set of 3 test rods at a length of 310 mm
- RSTI-68TRL -> Set of 3 test rods at a length of 460 mm
- RSTI-68TRA -> Set of 3 test rods, 2 x short (310 mm), 1 x long (460 mm)



QUESTIONS & ANSWERS

